



# **Puget Sound Clean Air Agency Diesel Fleet Facility Registration Program Overview**

Dennis McLerran,  
Executive Director

February 25, 2009



---

# **Diesel Fleet Facility Registration Program (DFFRP) Overview**

- **Description**
- **Rationale**
- **Objectives**
- **Principles**
- **Statutory Basis**
- **Related Programs**

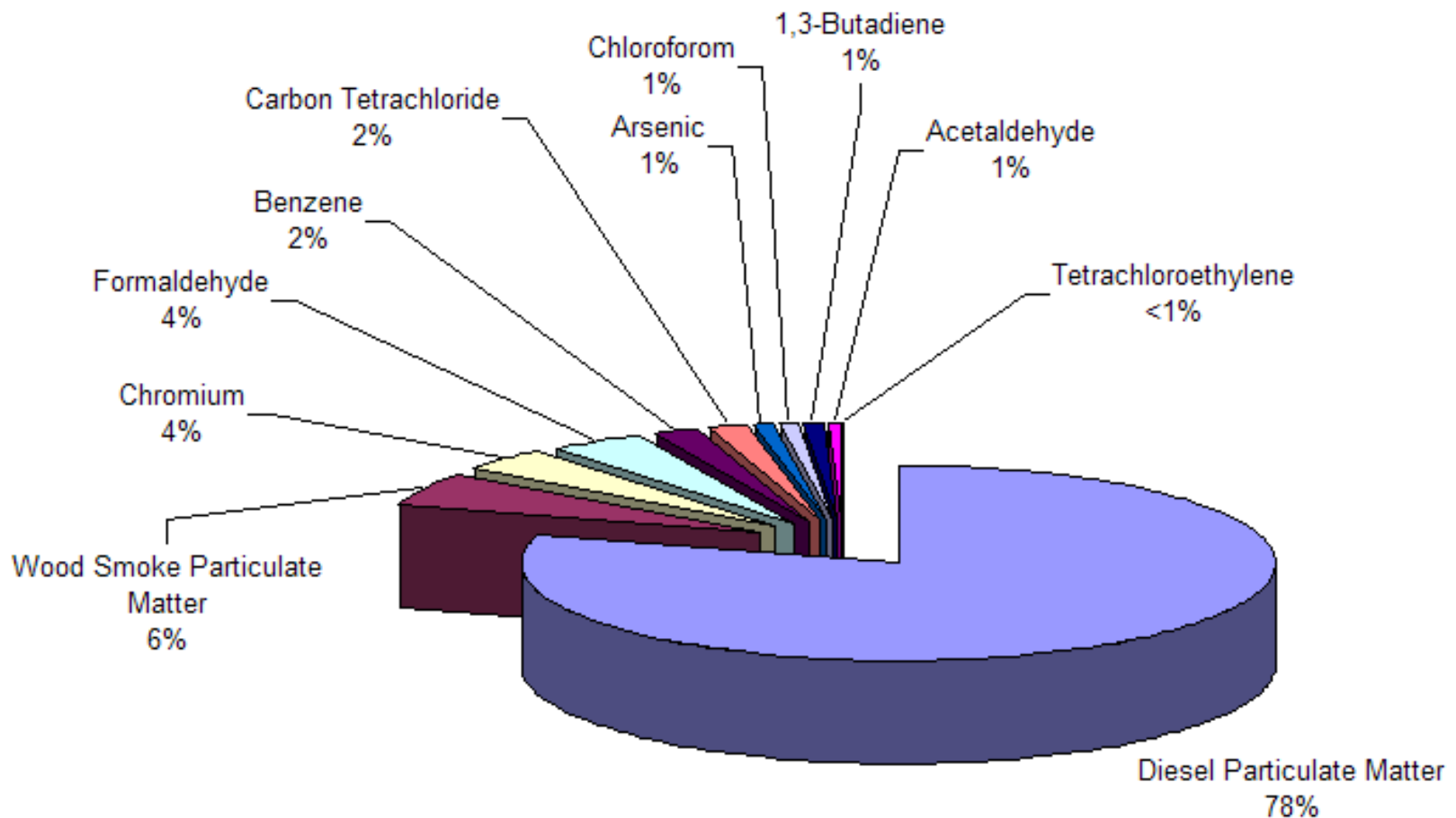
---

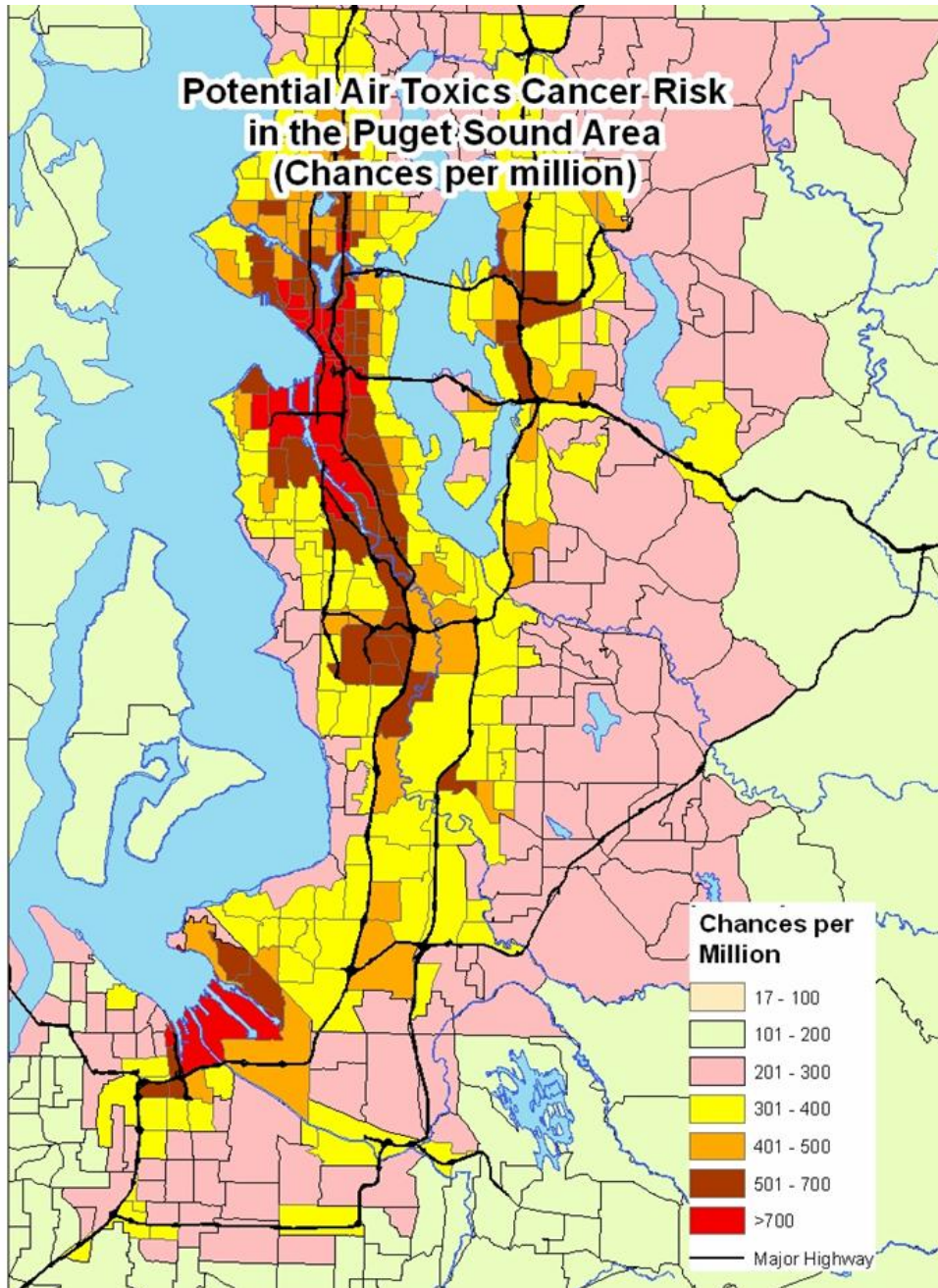
## Registration Program Description

- **Strategy to make agency's diesel reduction efforts sustainable**
- **Focus on indirect sources: diesel emissions from facilities that own, operate, or host on-road and non-road diesel fleets**
- **Register these facilities and use registration fees to fund diesel reduction efforts**
- **Design fee structure to create incentives for emission reductions**

# Diesel particulate matter accounts for nearly 80% of regional cancer risk from airborne toxics

### Greatest Air Toxics Contributors to Potential Cancer Risk Puget Sound Air Toxics Evaluation (2003)





**People living and working near urban areas and transportation hubs have the highest level of exposure**

---

## **Current Funding Model for Diesel Reductions is not Sustainable**

- **State grant funding has ended**
- **Agency's voluntary Diesel Solutions<sup>®</sup> program has helped install pollution control devices on:**
  - **2,500 school buses**
  - **1,300 transit buses and municipal trucks**
  - **More than 300 private fleet vehicles**
- **Diesel Solutions leveraged significant state grant funding to obtain several million dollars in federal grants and incentive funding**

---

## Registration Program Objectives

- **Protect public health by reducing exposure to diesel particulate matter**
- **Prioritize existing facilities that create the highest exposures**
- **Prioritize existing facilities that pose environmental justice considerations**
- **Mitigate the impacts of new facilities as they are built**
- **Recover the cost of implementing the program from the fees of the program**

---

## **Principles Guiding the Registration Program's Development**

- **Agency programs are transparent in their creation and implementation**
- **Reducing exposure to diesel particulate matter is an agency priority and an important public health challenge**
- **Helping facilities identify ways to reduce their emissions, and funding to implement them, is consistent with agency practices**

---

## **Registration Program Principles, continued**

- **Facilities pay fees that are related to their emissions**
- **Facilities that require more effort from the agency in order to administer the program pay a proportionately higher fee**
- **Both public and private facilities that own, operate or host diesel fleets are included in the program**

---

## Statutory Basis

- ***Classification of Sources of Pollution.*** Section 70.94.151 of the Revised Code of Washington (RCW) empowers the board to classify air contaminant sources that cause or contribute to air pollution, and to require registration and/or reporting from such classified sources.

---

## Statutory Basis, continued

- **Fees.** According to RCW 70.94.151(2), the amount of any fee collected as part of a registration program is limited to that necessary to “compensate for the costs of administering such registration or reporting program.”
- The amount of the proposed registration fee(s) will depend on the number of registered sources and the fee structure developed during the stakeholder and rulemaking processes.

---

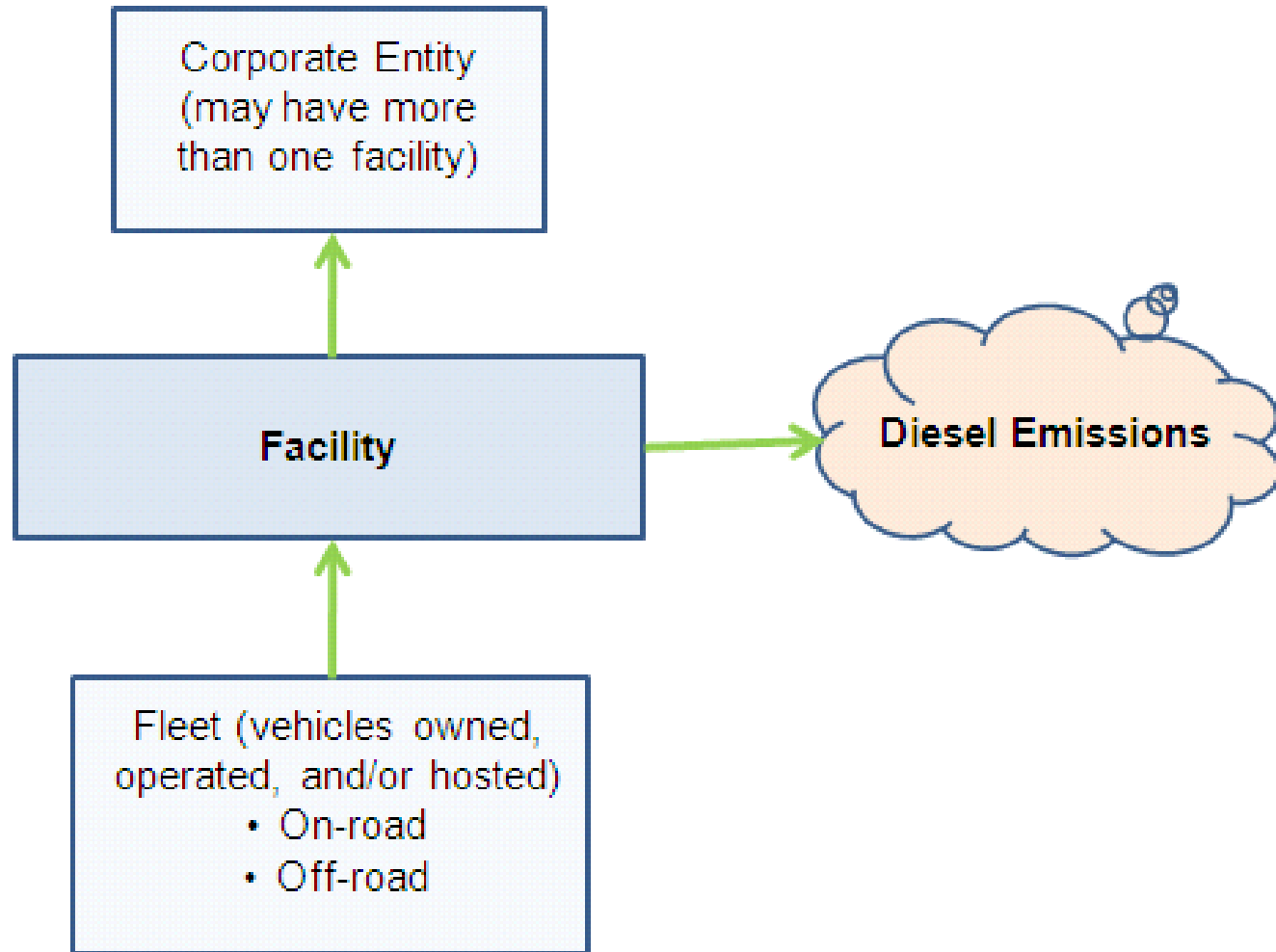
## Related Programs

- **Evergreen Fleets recognition program**
  - A voluntary agency program
  - Launching Spring 2009
  - Encourages reductions in CO<sub>2</sub> and diesel PM
- **Washington State Department of Ecology's greenhouse gas reporting rule**
  - Statewide rule requiring facility reporting & fees
  - Includes greenhouse gas emissions from a facility's fleet operations

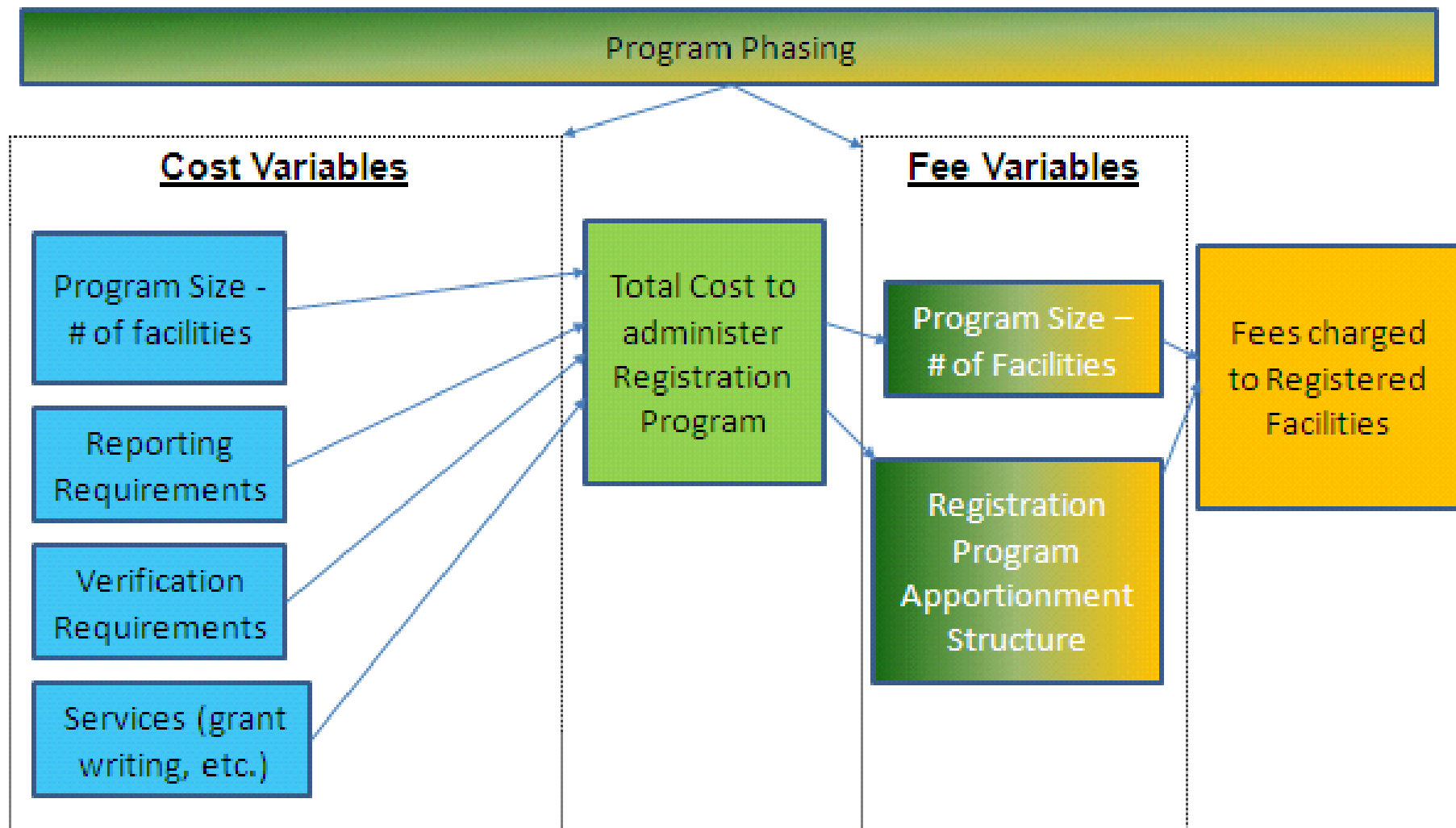
## **Background and Framework For Program Design**

- **Registration program focus**
- **Program components**
- **Key questions**

# Registration Program Focuses on Emissions of Diesel Particulate Matter at Facilities



# Program Design Will Determine Costs & Fees



---

## Key Questions

- **Program eligibility**: What are the thresholds and exemptions?
- **Facility responsibility**: What fleet-related emissions are facilities responsible for?
- **Reporting**: What information should facilities report?
- **Fee structure**: How will fees be linked to emissions and other factors?
- **Program elements**: What services will the program offer?
- **Phasing**: How can the program be phased in?